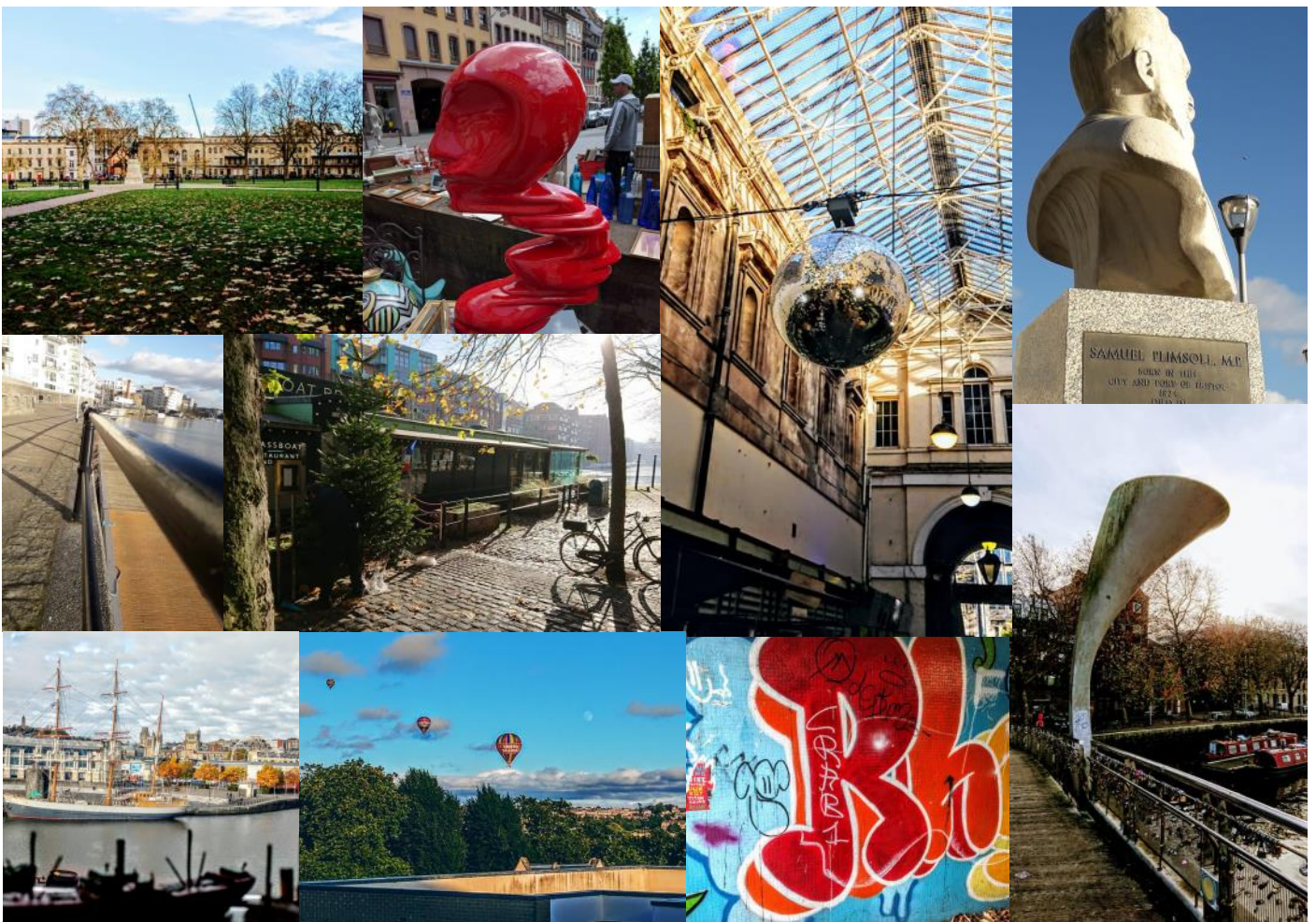




National
Germ Cell
Group

Welcome to Bristol
National Germ Cell Group Conference
Monday 23rd April 2018
Aztec Hotel & Spa



Supported by





National Germ Cell Group Conference 2018
Supported by Testicular Cancer Network



www.testicularcancernetwork.co.uk



The Robin Cancer Trust



Wendy Gough
cancer
awareness
foundation.

and



National Germ Cell Group Networking Dinner
Sunday 22nd April 2018
Supported by



Welcome to the first National Germ Cell Group Conference 2018

National Germ Cell Group (NGCG) is the newly formed association of the specialist clinicians, nurses and supporting professionals who treat patients with germ cell cancer in England, Wales, Scotland and Northern Ireland. Germ Cell cancer is rare and arises mainly in the testicle, but can present in the mediastinum, retroperitoneum and rarely in women in the ovary.

In 2012 Paul Hutton (QEH, Birmingham) and Zoe O'Neill (Coventry) organised the first national meeting of Germ Cell Nurses, to share ideas/network. This initial meeting brought a group of us together to organise further meetings Bristol 2014 and Birmingham 2016. Paul Hutton, Catherine Pettersen (Manchester) and Wendy Ansell (London) have worked together since 2012 and felt this to be the right time to invite clinicians and patient groups to become a wider group.

We are very lucky to have the support of respected clinicians Professor Jonathan Joffe; Dr Sara Stoneham; Dr Jonathan Shamash and Professor Andrew Protheroe all of whom are members of the NCRI Clinical Studies Group.

We welcome the support of our charities and newly formed Testicular Cancer Network (TCN) The TCN is a consortium of testicular cancer awareness, support & research charities working together to save the lives of men across the UK. Currently there are six members: Baggy Trousers UK; Cahonas; It's in the Bag; It's on the Ball; The Robin Cancer Trust and Wendy Gough Foundation. We would like to thank them and also Queen Elizabeth Hospital Charity and Orchid for their contribution.

Thanks go to Luan Suckling (event organiser) who has helped in so many ways in driving the group forward and making this event happen.

I hope you enjoy your day. Please evaluate honestly to guide the programme and the future development of the NGCG.

Sue Brand (NGCG Chair)

Hotel Arrangements

The registration desk, exhibition and refreshments during the conference will all be available in the Cotswold Suite Foyer. The charity stands who have supported this event are at the back of the auditorium. All refreshments during the conference, including lunch will be served in the Cotswold Suite. The TCN will retire to Room 5 for their separate programme, but may want to join the main conference for specific presentations. Parking today is FREE and a permit will be given for exit. WiFi is FREE and is found on your settings named 'Aztec Hotel'. To connect enter your email address.

Continuing Professional Development Credits

This conference has applied for 5 CPD credits and this, if awarded, will be noted on your certificate. Your certificate and delegation list will be emailed to you after the conference.

Delegation list

We will be distributing a full list of delegates after the conference, if you do not wish to be added to please tell the event organisers.

Evaluation

We can only improve the programme and venue if you tell us how we have done today.

Please complete the evaluation form in your pack and place in the box provided. We will be sending the scores to the presenters after the conference together with any comments relating to their presentation.



TOPIC	SPEAKER
0915: INTRODUCTION AND OVERVIEW OF TESTICULAR CANCER IN THE UK? A broad view of Testicular Cancer Services in the UK	Professor Johnathan Joffe
0920: TESTICULAR CANCER NETWORK – Charities working together.	Toby Freeman & Sue Brand
CONCURRENT SESSION (TCN) The Testicular Cancer Network attendees will adjourn to another meeting room for their separate meeting	
HEALTHCARE PROFESSIONALS PROGRAMME - CHAIRS FOR MORNING SESSION (Johnathan Joffe, Sue Brand & Rob Cornes)	
0930: STAGE ONE DISEASE – Just an orchidectomy? Surveillance Vs Adjuvant chemotherapy, Who chooses the patient or doctor?	Professor Johnathan Joffe
0950: METASTATIC DISEASE – Bleomycin evidence for screening pulmonary toxicity	Professor Andrew Protheroe
1010: WE ARE NOT ALL MEN! – FEMALE GERM CELL CANCER MDT management of female germ cell cancer.	Professor Ashita Waterston
FIRST BREAK – 30 MINS (1030 – 1100) CHAIRS FOR THE SECOND MORNING SESSION (Andrew Protheroe, Paul Hutton & Rob Cornes)	
1100: RPLND – Open Vs Laparoscopic Vs Robotic	Mr Tim Whittlestone Mr Salah Albuheissi Mr Ben Thomas
1130: RADIOTHERAPY IN GCT- An endangered species	Dr Amit Bahl
1150: DISCOVERING BIO MARKERS OF VASCULAR TOXICITY IN TESTIS CANCER PATIENTS	Dr Alan Cameron
1210: TESTOSTERONE DEFICIENCY SYNDROME – A case for face to face follow-up? Results of the Bristol Audit of those with TDS.	Dr Lara Gibbs
LUNCH BREAK – VIEWING STANDS – 60 MINS (12.30 – 1330) CHAIRS FOR AFTERNOON SESSION (Jonathan Shamash, Wendy Ansell & Paul Hutton)	
1330: MANAGING HIGH RISK PATIENTS: The management of acutely ill patients, the real story. A series of case histories with poor or intermediate disease.	Dr Sara Stoneham
1400: MANAGEMENT OF BRAIN METASTASES: A presentation of different treatment options for brain metastases in germ cell cancer.	Dr Jeremy Braybrooke
1430: SALVAGE THERAPY: Discussion of conventional, high dose chemotherapy and access to these various approaches	Dr Jonathan Shamash
AFTERNOON BREAK – 30 MINS (1500 – 1530) TCN to join the Healthcare professionals CHAIRS FOR THE SECOND AFTERNOON SESSION (Sara Stoneham, Catherine Pettersen & Wendy Ansell)	
1530: LIVING IS THE EASY BIT - THE RECOVERY PACKAGE FOR MEN WITH TESTICULAR CANCER: A patient experience of Testicular Cancer and long-term survival and late effects.	Liz Allison Sue Brand
1600: DEBATE Do you really need to follow-up men who have had testicular cancer?	
1630: Questions and closing remarks Date for 2020	

The Testicular Cancer Network attendees will adjourn to another meeting room for their separate meeting	
0930: CLINICAL UPDATE SESSION - WHAT'S NEW WITH TESTICULAR (GERM CELL) CANCER An overview of Testicular Cancer and current treatment trends and survival	Paul Hutton & Cath Pettersen
0950: BAGGY TROUSERS UPDATE	Jack Broadly
1000: CAHONAS UPDATE	Ritchie Marshall
1010: IT'S ON THE BALL UPDATE	Vince Wolverson
1020: IT'S IN THE BAG UPDATE	Andy Heather
FIRST BREAK – 30 MINS (1030 – 1100)	
1100: ROBIN CANCER TRUST UPDATE	Toby Freeman
1110: WENDY GOUGH FOUNDATION UPDATE	Wendy Gough
1120: TCN UPDATE AND PLAN GOING FORWARD	Toby Freeman & Jack Broadly
LUNCH BREAK – VIEWING STANDS – 60 MINS (12.30 – 1330) CHAIR FOR AFTERNOON SESSION	
1330: RUNNING A SURVIVORSHIP TOOLKIT DAY - A FACILITATORS EXPERIENCE	Tim Snary & Simon Chilcott
AFTERNOON BREAK – 30 MINS (1500 – 1530) TCN to join the Healthcare professionals	



Professor Johnathan Joffe: Professor Joffe consultant medical oncologist with a visiting professorship within the University of Leeds.

He has two areas of clinical interest: testicular cancer and breast cancer.

The testicular practice is based in Leeds where Prof Joffe is one of two consultants supervising a practice which sees between 5% and 7% of the National incidence of testicular cancer seeing up to 120 cases annually. He is past-chair (appointed through competition on the maximum two terms of 3 years) of the National Cancer Research Institute (NCRI) Clinical Studies Group (CSG) for Testicular Cancer.

His clinical trial activity in testicular cancer includes the largest ever prospective randomised study in early stage seminoma which will report within the next year. He has been a chief investigator, data monitoring committee member and chair for a number of studies and his joint publications in early stage testicular cancer have set the international standards of care in this area. Out with clinical and research activity, Prof Joffe is the immediate past-chair of his professional association, The Association of Cancer Physicians. He also sits on a number of Royal College Committees and is a member of the Independent National Cancer Advisory Group (CRUK)

Sue Brand: Germ Cell Clinical Nurse Specialist and current Chair of NGCG University Hospitals Bristol NHS Trust



Sue trained in Norfolk in 1978 as an EN then converted to RGN status in 1994. She has worked in many fields of nursing including acute medicine, ITU, CCU, rheumatology; intravenous therapy; haematology and now her 23 years in oncology. She set up IV services/training and develop chemotherapy services in Weston General Hospital then moved to University Hospitals Bristol NHS Trust in 1998 working firstly as a chemotherapy nurse, then a senior research nurse and since 2007 a Germ Cell CNS. She has developed the South West service, including the referral process to the supra-regional service, SOP for sperm storage, principal investigator for a study of sexual function in those on active surveillance, investigating testosterone deficiency syndrome; enhancing the recovery package for men with testicular cancer and co-founding "It's in the Bag". She has worked alongside other nurses to develop the Germ Cell Forum which has resulted in the National Germ Cell Group.



Toby Freeman : BCA. Founder & CEO The Robin Cancer Trust

The Testicular Cancer Network is a consortium of testicular cancer awareness, support & research charities working together to save the lives of men across the UK. Across the United Kingdom, charities and advocates are doing amazing work to bring life-saving awareness, support and research to young men in their communities. The Testicular Cancer Network is a consortium of small charities that have come together to share best-practise and medical information; offering a common voice to our common goal – to save lives through the early detection and to improve the lives of those affected by testicular cancer.

The Testicular Cancer Network is working alongside the National Germ Cell Group – the association of the specialist clinicians, nurses and supporting professionals who treat patients with germ cell cancer in the UK. All members of the TCN have been vetted by the NGCG and are registered with the Charity Commission or CIC Regulator to ensure good governance.

Wendy Ansell: Macmillan Urology Nurse Specialist (Retired)



Wendy was the first Macmillan Urology Nurse Specialist in the UK and remained in that role in Medical Oncology at Barts for 20 years until retirement from clinical work in 2017. Since qualifying at Barts in the 1970's, Wendy spent the greater part of her nursing career in cancer nursing in both hospitals and hospices. The particular interest in uro-oncology started when she was a Ward Sister at the Royal Marsden in the 1970's and was privileged to be looking after young men with metastatic testicular cancer when cisplatin came into clinical use and revolutionised the outcomes of treatment. As Macmillan CNS, a large part of the role was supporting men with testicular cancer at all stages of their disease and support after treatment has finished. Nationally, Wendy has fulfilled diverse roles including being the founder chair of the BAUN Section of Oncology, a member of the steering group for the UK prostate link website, an early reviewer for testis cancer Peer Review measures & reviewing patient information for a number of national charities. She is currently a Steering Group member for the National Germ Cell Group.



Paul Hutton: Macmillan Clinical Nurse Specialist in Testicular Cancer, University Hospitals Birmingham, NHS Foundation Trust.

Paul qualified at the Queen Elizabeth Hospital Birmingham in 1990 and worked in various cancer nursing roles within the hospital and community setting. In 1999 he became the first Macmillan funded site-specific testicular cancer nurse specialist. Together with Zoe O'Neill (Coventry CNS) he organised the initial germ cell nurse specialist meeting in Birmingham in 2011. He is a Steering Group member of the

National Germ Cell Group.





Professor Andrew Protheroe:

Associate Professor of Consultant Oncology Oxford University Hospitals NHS Trust.

He has specialised in Urological Oncology at Oxford since 2001. He qualified from St Thomas’s Hospital in London and after general medical training in London, trained in Oncology at St James’s University Hospital in Leeds. His PhD was in tumour immunology and the research was at Leeds and at the National Cancer Institute in Amsterdam. He has been Clinical Director of Oncology at Oxford and chair of the Oxford Cancer Directorate Therapeutics Committee and member of the Oxfordshire Cancer Treatment Panel. Currently a member of the NIHR Testis Cancer CSG, previously a member of the Renal and Bladder cancer CSG’s and a member of the Bladder chemotherapy subgroup. Since 2014 been the co-clinical director for the NIHR Thames Valley and South Midlands Clinical Research Network. He has established and run successfully a large portfolio of clinical studies in urological cancer (some Phase I mainly phase II and III) locally, with national and international collaboration, both as CI and PI. He has published over 80 peer-reviewed papers and is also the founding trustee of a urological cancer charity (UCARE).

Professor Ashita Waterston: Professor of Medical Oncology

Department of Medical Oncology Beatson West of Scotland Cancer Centre, Glasgow, United Kingdom.

Prof Waterston graduated from Glasgow University in 1993 in medicine with an intercalated degree in Immunology. She then completed her training in Glasgow prior to taking up a PhD in Imperial College, undertaking most of her registrar training in London. She returned to Glasgow in 2004 and been a consultant at the Beatson for over 10 years. She specialises in Melanoma, Germ cell with a particular interest in female germ cell cancer and has been a lead in the development of immunotherapy services in the Beatson. She is Training Programme Director for Medical oncology in Scotland.



Mr Tim Whittlestone: Consultant Urological Surgeon & Clinical Director of Surgery, Anaesthesia and Critical Care.

North Bristol NHS Trust.

A Urologist by training he now focuses exclusively on retroperitoneal tumours and lymph node disease for Germ Cell Cancer. He divides his time between clinical medicine and Chairing the Division of Surgery and Critical Care at Southmead Hospital. He works in

partnership with his colleague Salah Albuheissi to provide a comprehensive range of surgical options for men with metastatic Germ Cell Tumours.

Mr Salah Albuheissi: Consultant Urological Surgeon



Mr Benjamin Thomas: Consultant Urological Surgeon Addenbrooke’s Hospital, Cambridge University Hospitals, Cambridge

After graduating from the University of Melbourne in 2003, he completed his urological training in Australia at the Royal Melbourne Hospital before completing a uro-oncology fellowship at Addenbrooke’s Hospital, Cambridge and a robotic fellowship at the Karolinska Institute, Stockholm. He completed a Master of Philosophy degree at the University of Cambridge in 2013 and has been a consultant urological surgeon at Addenbrooke’s Hospital, Cambridge, since 2013. He has a particular interest in robotic surgery for bladder, prostate and testicular cancer but also performs open surgery for bladder cancer, testicular cancer and kidney cancer. He has been Chair of the Urology Multi-Disciplinary Team in Cambridge. He is actively involved in research and is on the NCRI Testis Cancer CSG as well as having published widely and presented internationally. Recently, he has been developing a robotic retroperitoneal lymph node dissection service in Cambridge.



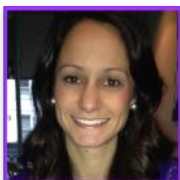
Dr Alan Cameron: Clinical Research Fellow Institute of Cardiovascular Medicine at the University of Glasgow.

Dr Cameron has been working closely with Professor Rhian M Touyz, Dr Ninian N Lang and Dr Jeff White over the past 3 years to establish research and clinical collaborations between the Institute of Cardiovascular Medicine at the University of Glasgow and the Institute of Cancer Studies at the Beatson West of Scotland Cancer Centre. Through this collaborative network, we have a programme of translational cardio-oncology research, focussing on the cardiovascular effects of cisplatin and VEGF inhibitor chemotherapy. Dr Cameron was a Finalist in the Young Investigator Award at the Global Cardio-Oncology Summit 2017. We are investigating mechanisms which cisplatin induces endothelial dysfunction and exerts prothrombotic effects and the role of endothelin 1 in VEGF inhibitor-associated hypertension and vascular injury. The results from these studies will inform to prevent and to treat the significant potential for the major cardiovascular morbidity associated with these drugs.

Dr Sara Stoneham: Paediatric and Adolescent Oncology Consultant, University College Hospital, London.

Dr Stoneham is the current chair of the NCRI CCL Clinical Studies Group Germ Cell Tumour working group and has with a specific interest in adolescent germ cell tumours. She is also the TYA representative on the NCRI Testis clinical studies group and a founder member of the Malignant Germ Cell Tumour International Collaborative. She is the UK chief investigator for the CRUK funded international collaborative clinical study for standard and low risk GCT, AGCT 1531.





**Dr Lara Gibbs: Medical Oncology Registrar
University Hospitals Bristol NHS Foundation Trust.**

I graduated from Bristol in 2009 and became a medical oncology registrar in 2014. Whilst working with the Bristol Testicular Cancer Service, I became interested in the tumour site which I hope to be able to sub-specialise in when I qualify. While working in the BTCS became interested in the unreported prevalence of testosterone deficiency syndrome, so decided to do a retrospective audit. We presented the results, in poster form, at ESMO Madrid, 2017. There is a lack of standard diagnostic criteria. Further prospective multi-centre studies could better define the prevalence of testosterone deficiency syndrome in these patients and be used to inform a standard diagnostic approach.

**Dr Jeremy Braybrooke: Consultant Medical Oncologist
University Hospitals Bristol NHS Foundation Trust.**



Since his appointment in 2003 Jeremy has developed a large research based practice specialising in the treatment of patients with breast and germ cell cancers. He is the lead clinician for the Bristol Testicular Cancer Service and, working with both the clinical team and 'It's in the Bag' has helped develop an innovative patient focussed service. The Bristol team work with clinicians across the South West of England to support patients following the diagnosis of germ cell cancer. In addition to clinical work Jeremy sits on a NICE Technology Appraisal committee and is a member of the Early Breast Cancer Trialists Collaborative group based at the University of Oxford.



**Dr Jonathan Shamash: Consultant in Medical Oncology
St Bartholomew's Hospital, London.**

Dr Shamash has a sub-specialty interest in germ cell tumours and chairs the Anglian Supra-regional Germ Cell MDT which covers a population in excess of 7 million. He was appointed Chair of the National Cancer Research Institute (NCRI) Clinical Studies Group (CSG) for Testicular Cancer 2 years ago. He has a specific interest in relapsed/ refractory germ cell tumours and approaches to their management - the use of intensive dose dense regimens for salvage as well as the use of high dose chemotherapy and stem cell transplantation. He has published on the use of novel drug combinations in this setting - in particular the use of non cisplatin based therapies and the use of chemotherapy only regimens to manage brain metastases. In those with metastatic good risk seminoma he has been involved in the development of carboplatin monotherapy as an alternative to combination chemotherapy as well as the prediction of bleomycin lung toxicity.

**Liz Allison: Germ Cell Clinical Nurse Specialist
University Hospitals Bristol NHS Trust.**



Liz qualified as an RGN in 1992 in St Thomas' Hospital, London. She initially worked in London; Acute care, ITU, HDU and Acute Assessment Unit. Here she developed multi-skilled working, an early patient focused care model. She has been involved in some amazing projects at a top level which have impacted on the shaping of acute services across the NHS. This included working alongside the DoH to redesign the 'acute hospital setting' including a new hospital build and piloting new ways of working for medical staff. She moved to Bristol in 2003 and spent some time as Modern Matron / Assistant Director of Nursing in Western General Hospital being responsible for surgical/orthopaedic wards, theatres, ITU and OPD. Although valuable, she found sufficient evidence that management is not for her! However during this time she managed the Clinical Nurse Specialists and realised that this was the ideal job for her. She started her new career pathway as a band 5 in the Chemotherapy Day Unit in the Bristol Haematology and Oncology Centre, followed by 4 years as an Oncology Research Nurse. In 2014 Liz became the Germ Cell and Sarcoma CNS. Liz has a particular interest in the Teenagers and Young Adults and is integral to the TYA MDT. She has helped develop a new combined TYA End of Treatment Clinic jointly with a psychologist. She is passionate about the recovery package and especially meeting the needs of patient with specific age and gender related issues.



**Catherine Pettersen: Macmillan Urology Clinical Nurse Specialist
The Christie NHS Foundation Trust**

Catherine qualified as SRN in 1983, worked on Neurosurgical ward for 2 years and then moved into Oncology, and has worked in this area for 30 years. Initially working on the surgical oncology ward at The Christie, then as a Nurse Practitioner in the Acute Oncology Service. She then moved to a local DGH as a Macmillan Breast Care CNS in 2003, returning to the Christie in 2007 in her present role. At that time she established the CNS service for testicular cancer patients at the Christie NHS foundation Trust which is a Supra Regional centre for testicular cancer. She works with both oncology and surgical teams, which is advantageous when patients require multi-modality treatment. Catherine has done advanced clinical skills training and reviews testicular cancer patients within the consultant testicular clinics and runs nurse led prostate cancer clinics in the community. She is a steering group member of the National Germ Cell Group





National Germ Cell Group

Supported by



www.nationalgermcellgroup.org.uk
admin@nationalgermcellgroup.org.uk
[@NGermCellG](https://www.instagram.com/NGermCellG)